

- Each box has an embossed or printed code, or a sticker for identification.
- When using double-sided tape, the box can no longer be folded. In that case, use transparent tape.

Armchair | 2-seater Sofa | 3-seater Sofa

- 1, 2 or 3 boxes seat | 60 x 60 x 40cm (**3-ZST**)
- 1, 2 or 3 boxes backrest | 60 x 20 x 74cm (**2-RLET**)
- 2 boxes armrest | 80 x 15 x 60cm (**1-AL**)
- 1 fabric cover

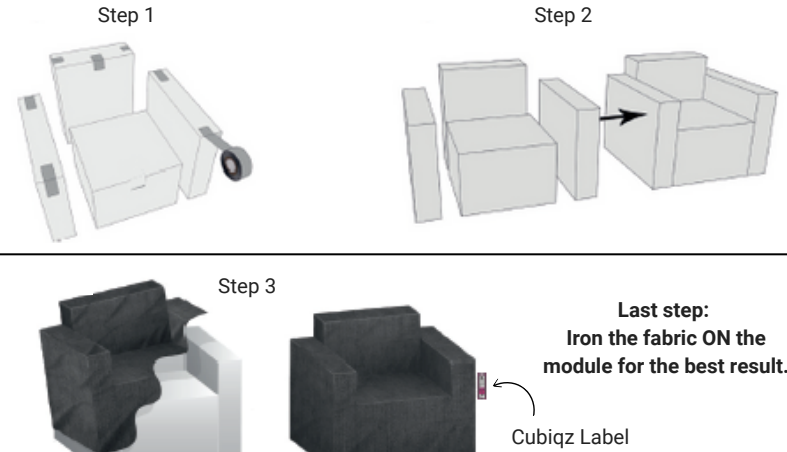
Step 1: Close the required boxes separately with tape.

Step 2: Group the boxes into an armchair / couch.

Step 3: Pull the fabric cover down evenly.

(Tip: The CUBIQZ label is always on the front of the right armrest.)

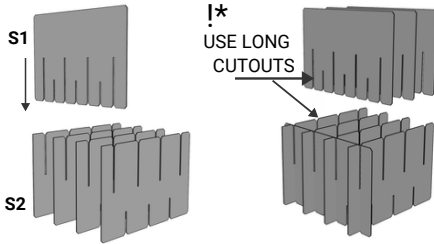
Optional - Use small pins in the corners of the seat to fix the fabric.



Seat Reinforcement:

- 4 x S1
- 4 x S2

Take four parts S2.
Slide four parts S1 in
to S2.



If you have ordered seat reinforcement to make your furniture suitable for sitting, please follow these instructions:

Installing the Seat Reinforcement:

Slide the seat box over the seat reinforcement. Then follow the remaining instructions to fully assemble the furniture.

Cabinet / TV-cabinet

- 1 box | 90 x 50 x 45cm (**8-BK**)
- panel | white or wood look
- 1 cross | two cardboard plates slide into each other
- 4 plastic feet | optional
- Velcro rounds | hard and soft

Step 1: Close the box on one side and secure them using the tabs.

Step 2: Slide the two plates into a cross.

Step 3: Slide this cross into the opening of the box. Close the box as described in step 1.

Step 4 and 5: Close the box and attach (optional) the four feet in the corners.

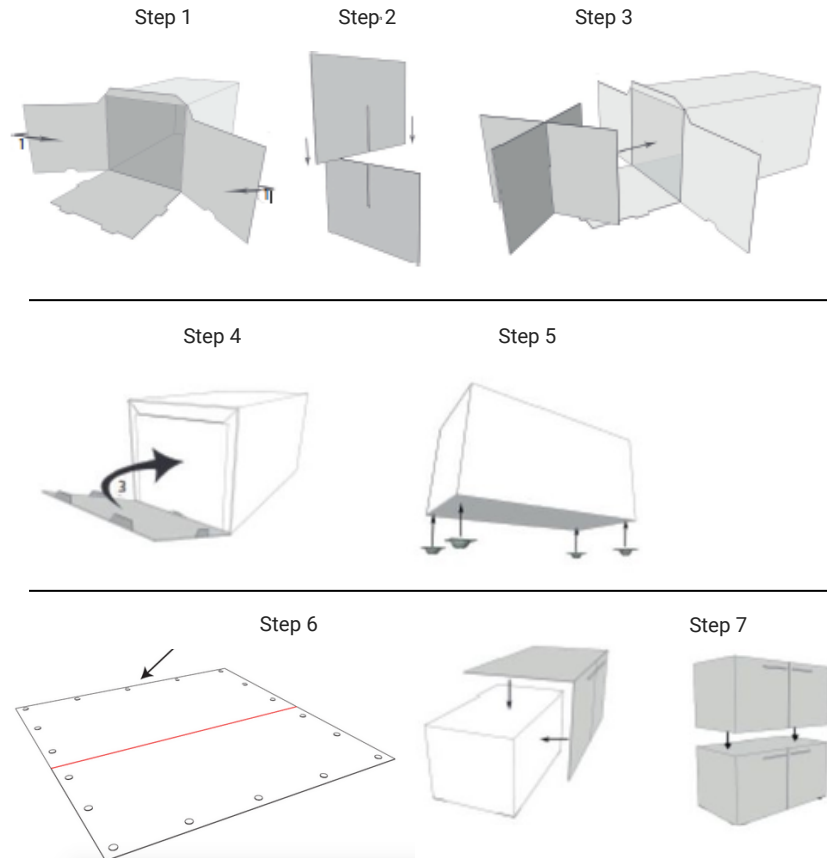
Step 6: Mount the soft Velcro circles with the adhesive side on the designated positions on the panel. Then attach the hard Velcro circles on top of the soft, fluffy side of the circles already mounted.

Place the panel onto the box and press the Velcro firmly.

TIP: First position the front of the panel on the box. Once it's properly aligned, place the top side on the box and press the panel (Velcro) firmly in place.

Step 7 - For taller cabinets, the boxes can be stacked.

Note: For stacked products, only the top box should contain a cross.



Dinner Table

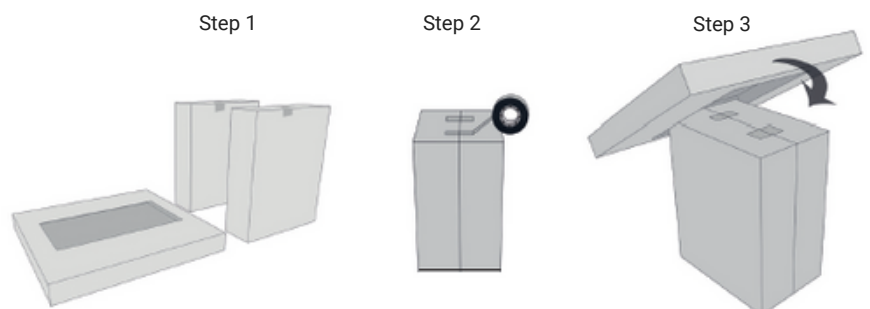
- 1 box | 90 x 90 x 10cm (**7-ETAW-B**)
- 2 boxes | 60 x 20 x 74cm (**2-RLET**)
- 1 cardboard plate | already inside the tabletop

Step 1: Seal the boxes for the base individually with transparent tape. Close the tabletop using double-sided (or transparent) tape. Leave the provided reinforcement plate inside the tabletop, as it serves as support.

(Tip: Place the tabletop on a flat surface while taping to ensure it remains level.)

Step 2: Tape the two boxes for the base together.

Step 3: Slide the box with the plate inside over the base using the opening in the table top.



Attention: Only use tape on the top side and under side of the table leg. Otherwise the tape will show.

- Each box has an embossed or printed code, or a sticker for identification.
- When using double-sided tape, the box can no longer be folded. In that case, use transparent tape.

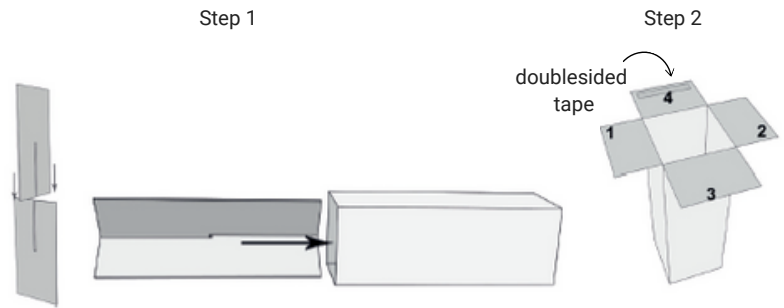
Pillar

- 1 box | 28 x 28 x 80cm (**5-ZSH**)
- 1 cross | two cardboard plates slide into each other
- 1 coverplate (optional)

Step 1: Slide the two plates into a cross. Slide this cross into the opening of the box.

Step 2: Seal the box using double-sided tape or transparent tape. Make sure to follow the flap sequence as shown in the diagram.

Optional; Place the coverplate on top.



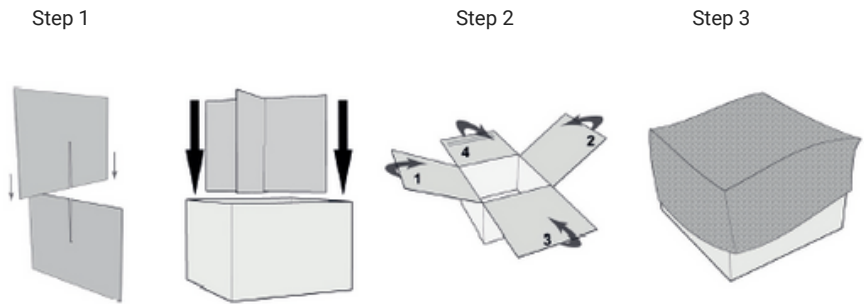
Coffeetable | Hocker

- 1 box | 60 x 60 x 40cm (**3-ZST**)
- 1 cross | two cardboard plates slide into each other
- 1 fabric cover | optional

Step 1: Fold the box and place the cross.

Step 2: Seal the box using double-sided tape or transparent tape. Make sure to follow the flap sequence as shown in the diagram.

Step 3: (Optional) Pull the fabric cover down evenly.
Tip: Iron the fabric ON the module for the best result.



*If you have ordered seat reinforcement, please refer to the armchair/2-seater/3-seater product on the first page.

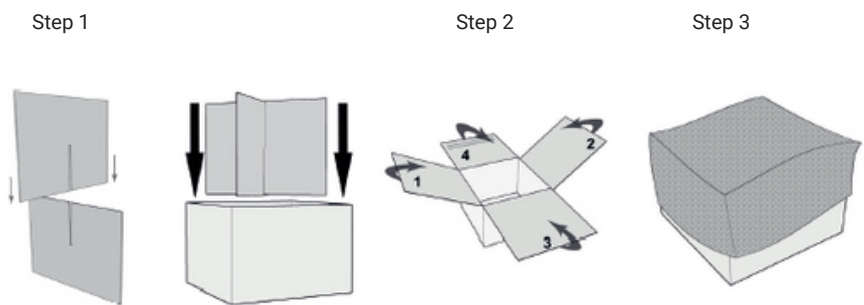
Sidetable | Nightstand | Hocker

- 1 box | 45 x 45 x 45cm (**4-BTNKK**)
- 1 cross (sidetable, hocker) | two cardboard plates slide into each other
- 1 fabric cover | optional

Step 1: Fold the box and place the cross.

Step 2: Seal the box using double-sided tape or transparent tape. Make sure to follow the flap sequence as shown in the diagram.

Step 3: (Optional) Pull the fabric cover down evenly.
Tip: Iron the fabric ON the module for the best result.



Bed

- 4, 6 or 8 dozen | 90 x 50 x 45cm (**8-BK**)
- 1 or 2 dozen | 90 x 10 x 90cm (**7-ETAW-B**)

Step 1: Fold the boxes for the bed and close them using the tabs.

Step 2: Fold the box for the headboard and seal it with double-sided tape.
(Tip: Place the tabletop on a flat surface while taping to ensure it remains level.)

Step 3: Shape the boxes into a bed.

Tip 1: The boxes are 50cm deep and 45cm high. By tilting the box, a different bed size can be achieved.

Tip 2: Secure the boxes together using transparent tape.

Tip 3: When using covers, make sure the seams are neatly aligned at the corners. Dress the bed with bedding.

Tip 4: The sewn-in Velcro circles should be placed on the long sides. Hard Velcro rounds are supplied separately. Attach them to the soft side and fix them to the box. (For the 150x180 bed, there will be 2 Velcro rounds on the long sides and 1 on the short sides.)

